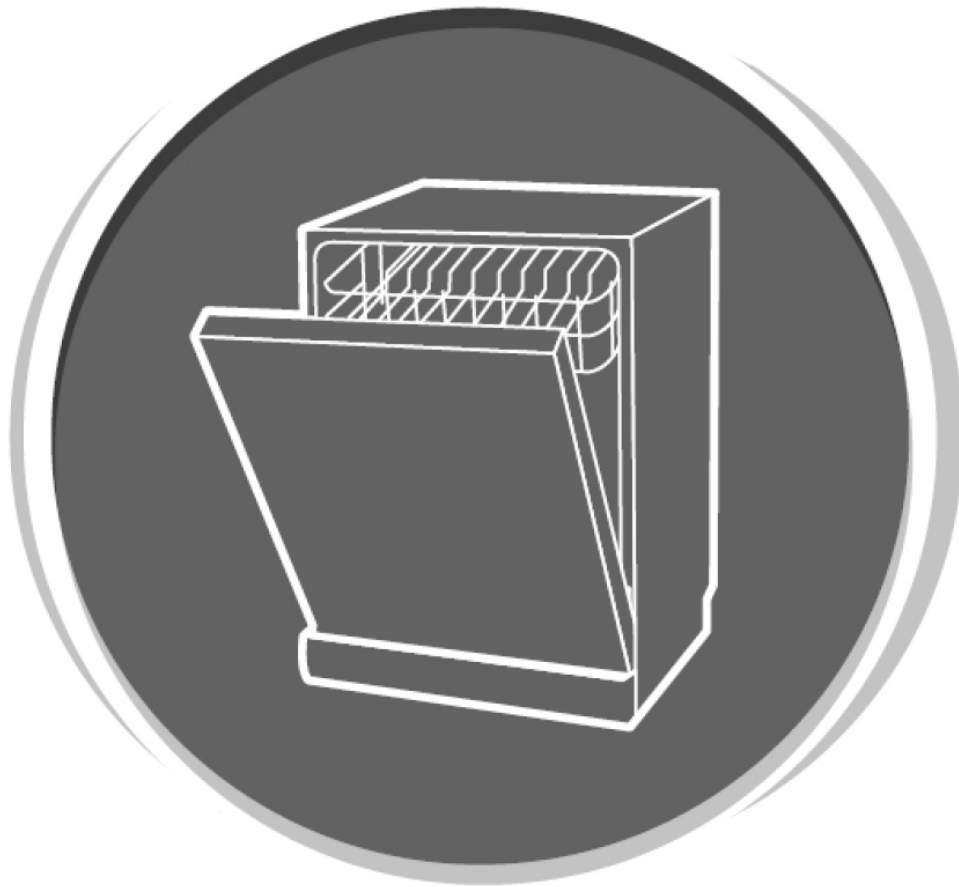


# BOMANN®

HOUSEHOLD BUILT-IN DISHWASHER GSPE 7413 TI



Instruction Manual

CE

## Contents

Introduction .....	Page 3
General Notes .....	Page 3
Special safety Information for this Unit .....	Page 4
Unpacking the Appliance .....	Page 5
Appliance Equipment .....	Page 5
Installation .....	Page 5
Prior Using for the first Time .....	Page 9
Loading the Dishwasher .....	Page 12
Startup / Operation .....	Page 14
Cleaning and Maintenance .....	Page 17
Troubleshooting .....	Page 18
Technical Data .....	Page 19
Disposal .....	Page 19

## Introduction

Thank you for choosing our product. We hope you will enjoy using the appliance.

### Symbols in these Instructions for Use

Important information for your safety is specially marked. It is essential to comply with these instructions to avoid accidents and prevent damage:

#### **WARNING:**

This warns you of dangers to your health and indicates possible injury risks.

#### **CAUTION:**

This refers to possible hazards to the machine or other objects.

 **NOTE:** This highlights tips and information.

## General Notes



Read the operating instructions very carefully before putting the appliance into operation and keep the instructions including the warranty and the receipt. If you give this device to other people, also pass on the operating instructions.

#### **NOTE:**

- Due to constant product modifications, your device may differ slightly from these operating instructions; Functions and methods of use remain unchanged.
- The illustrations in these operating instructions may differ from the original device.
- The appliance is designed exclusively for private use and for the envisaged purpose. This appliance is not fit for commercial use.
- The appliance is only to be used as described in the user manual. Do not use the appliance for any other purpose. Any other use is not intended and can result in damages or personal injuries.
- Operate the appliance only **properly installed**.

- Do not use it outdoors. Keep it away from sources of heat, direct sunlight and humidity.
- Do not operate the appliance **without** supervision.
- When not in use, for cleaning, user maintenance works or with disruption, switch off the appliance and disconnect the plug (pull the plug itself, not the lead) or turn off the fuse.
- The appliance and if possible the mains lead have to be checked regularly for signs of damage. If damage is found the appliance must not be used.
- For safety reasons, alterations or modifications of the appliance are prohibited.
- To ensure your children's safety, please keep all packaging (plastic bags, boxes, polystyrene etc.) out of their reach.

#### **WARNING:**

Do not allow small children to play with the foil. There is a **danger of suffocation!**

## Special safety Information for this Unit

- The maximum number of place settings to be washed is 9.
- This unit is intended to be used in household and similar applications such as
  - staff kitchen areas in shops, offices and other working environments;
  - by clients in hotels, motels and other residential type environments;
  - in farm houses.
- The appliance is to be connected to the water mains using new hose sets and that old hose-sets should not be reused.
- The maximum permissible inlet water pressure is 1 Mpa.
- The minimum permissible inlet water pressure is 0.04 Mpa.
- In the appliance bottom are located ventilation openings (depending on model). These may not be clogged e.g. by carpet.
- Pay attention to a proper loading of the appliance. Follow the instructions in the chapter “Loading the Dishwasher”.
- Knives and other utensils with sharp points must be loaded with their points down in the cutlery basket (depending on model) or placed in a horizontal position in the dishwasher basket.
- The door should not be left open, as this could increase the risk of tripping.
- This appliance can be used by **children** aged from 8 years and above and persons with reduced physical, sensory or mental capabilities or lack of experience and knowledge if they have been given supervision or instruction concerning **use of the appliance** in a safe way and understand the hazards involved.

- **Children** who are younger than 8 years must be kept away from the device.
- **Children** shall not play with the appliance.
- **Cleaning and user maintenance** shall not be made by **children**, unless they are older than 8 years and are supervised.
- Do not try to repair the appliance on your own. Always contact an authorized technician. If the supply cord is damaged, it must be replaced by the manufacturer, its service agent or similarly qualified persons in order to avoid a hazard.

### Unpacking the Appliance

- Remove the appliance from its packaging.
- Remove all packaging material, such as foils, filler and cardboard packaging.
- To prevent hazards, check the appliance for any transport damage.
- In case of damage, do not put the appliance into operation. Contact your distributor.

#### **i** NOTE:

Production residue or dust may have collected on the appliance. We recommend cleaning the appliance according to chapter "Cleaning and Maintenance".

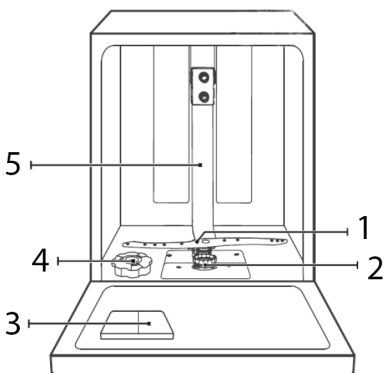
- |                   |                  |
|-------------------|------------------|
| 1 Lower spray arm | 4 Salt container |
| 2 Filter system   | 5 Inner pipe     |
| 3 Dispenser       |                  |

#### Delivery scope

2x dish basket, 1x cutlery basket, 1x cup rack, 1x cup shelf, 1x salt funnel tube, 1x inlet hose, *incl. Installation material*

### Appliance Equipment

#### Appliance Overview



### Installation

#### **⚠** WARNING:

The unit must not be connected to the mains during installing. Otherwise there is **danger to life** or **electric shock hazard!**

#### **⚠** CAUTION:

For a correct operation the appliance must be connected properly. The specifications for water supply and drain as well as the electrical connection must fulfill the required criteria.

#### Installation location

- The site should be located near the water inlet and outlet, as well as near a properly grounded

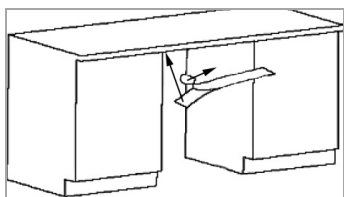
power socket. Arrange a place in the cabinet under the sink for the cable and hoses.

- Consider the necessary installation dimensions (see “Installation steps”).
- Take care of a solid and horizontal position of the appliance. If the appliance is not horizontally leveled, adjust the feet accordingly.
- Power cord and water hoses may not kinked or squashed.
- **Avoid the installation:**
  - near heaters, next to a stove, direct sunlight or any other heat sources;
  - at locations with high humidity (e.g. outdoors), as metal parts would be susceptible to corrosion under such circumstances;
  - in rooms where the temperature could drop below freezing. Do not expose the appliance any weather;
  - near volatile or flammable materials (e.g. gas, fuel, alcohol, paint, etc.).

### Installation steps

#### Attach the condensation strip

Attach the strip under the wooden worktop to prevent it from damages of ascending water vapor.

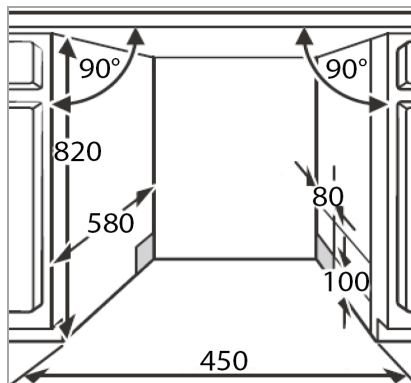


- First clean and dry the concerned area of the worktop thoroughly.
- Remove the protective foil from the condensation strip and stick it flush with the worktop edge.

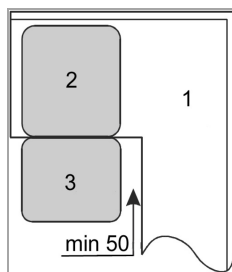
#### Cabinet opening

Prepare the cabinet opening according the drawing.

Unit mm



If the appliance is installed at the corner of the cabinet, there must remain enough space to open the appliance door.



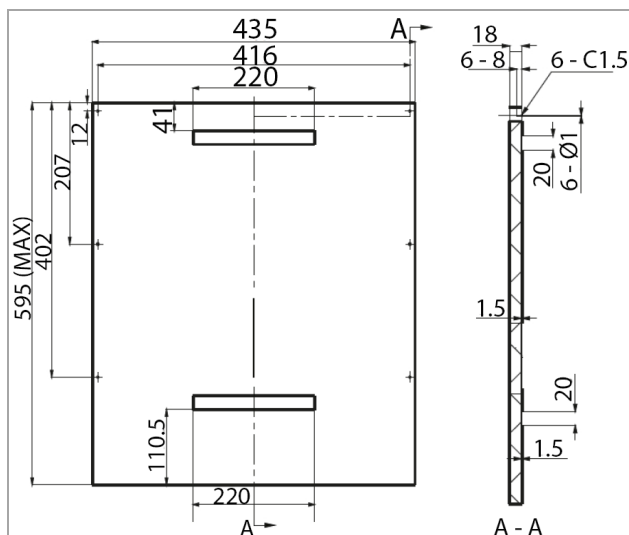
- 1 Kitchen furniture
- 2 Dishwasher
- 3 Appliance door

Unit mm

#### Dimension and preparation of the decoration panel

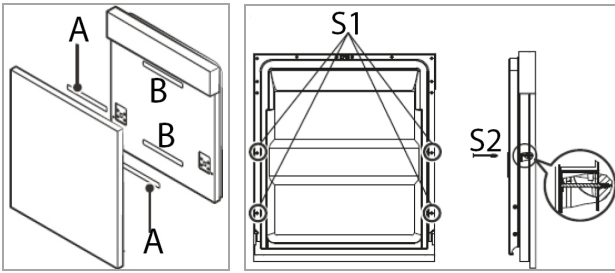
Prepare the wooden decorative panel according to the dimensional drawing:

Unit mm



- Align the drilling template and mark the necessary holes. Check this with a spirit level.
- Drill holes of  $\varnothing 2$  mm and 8 mm depth at the pre-marked positions in the panel.

### Fixing the decoration panel



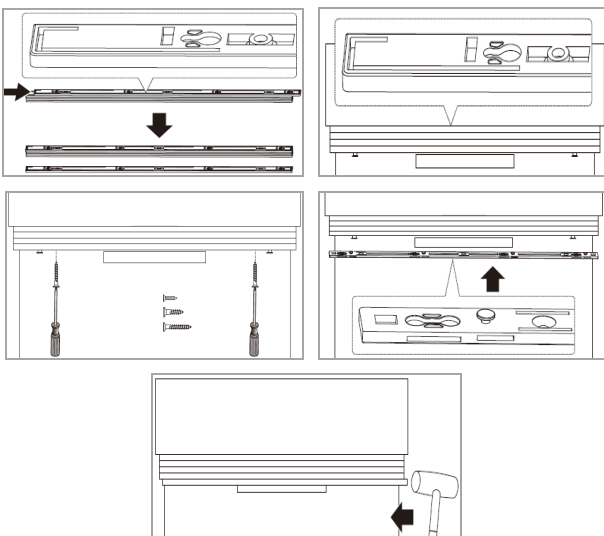
- Separate the supplied Velcro strips (A) and (B) from each other.
- Glue the Velcro strip (A) on the wooden panel (at the top and bottom) and the felt strip (B) in the same heights on the appliance door.
- Align the panel and the appliance front against each other and fix the panel on the appliance door.
- First remove the factory-mounted short screws (4xS1) from the door inside.
- Screw the supplied long screws (4xS2).

### Using the top spacer

With this accessory you can compensate the gap between the control panel and decoration panel.

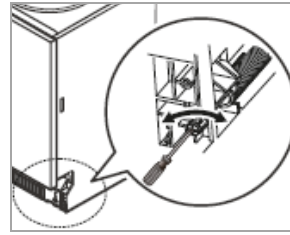
The top spacer consists of several layers, which are connected with a click mechanism.

Adjust the height of the top spacer to the gap. To do this, remove the appropriate number of layers.



### Adjusting of the door spring tension

After fixing the decoration panel, the door spring tension must be adjusted accordingly.



- Turn the adjusting screws as needed in the clockwise or counterclockwise direction. The steel cable tightens or loosens.
- Check the door spring tension. If the door remains fully open horizontally and can still be easily closed, the tension is correct. Otherwise do the adjusting again.

### Connection to the water supply

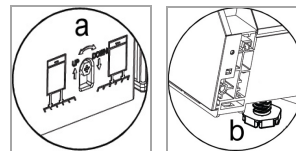
Connect the water inlet hose as well as the water drain hose properly. Follow the instructions that we give you under "Water connection".

### Installation to the power supply

Consider the instructions that we give you under "Electrical connection".

### Adjusting the feet

Place the appliance in its proper position and take care that it is leveled solid and horizontal. Check this with a spirit level.

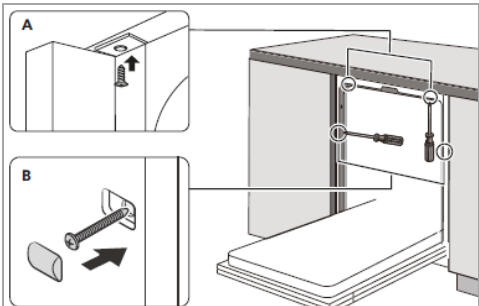


The maximum adjustment height of the feet is 50 mm.

- You can adjust the back foot by the adjusting screw (a) at the center of the appliance plinth front with an Allen key.
- Adjust the front feet (b) with a screw-wrench until the dishwasher is leveled.

## Fixing the dishwasher

Fix the appliance by tightening the screws from the appliance inside to the provided holes accordingly.



- A.** If the worktop made of wood, fasten the appliance to the worktop.
- B.** If the worktop made of marble or granite, fasten the appliance sideways with the housing unit. Put the screw covers on.

## Water connection

### ⚠ CAUTION:

- The installation of the water supply must conform to the local laws and regulations.
- The appliance is **not** suitable for hot water supply.
- Use the new supplied hose set to connect the appliance to the water supply. Do not reuse old or used connection sets.
- If the water pipe is new or long time not used, ensure before connecting to the water system, that the water is clear and free from contamination.

## Notes on inlet hose safety system (delivery scope depending on model)

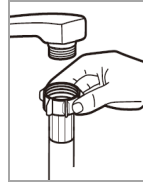
The safety system consists of a double-walled inlet hose. It guarantees to cut off the water supply when leakage of the inner hose. Switching off the water supply leads over an electronic contact.

If necessary, you can order an inlet hose safety system from your dealer or in our online accessories shop, [www.bomann-germany.de](http://www.bomann-germany.de). To order, use the reference number found under "Technical Data".

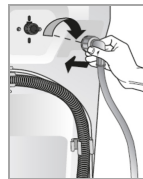
## Connect the water inlet hose (cold water connection)

### ⓘ NOTE:

The water pressure must be between 0.04-1.0 MPa. With higher pressure: use a pressure regulator.



- Connect the water inlet hose to a water thread with  $\frac{3}{4}$ ". Screw the hose firmly in the direction of the screw thread; pay attention for a tight fit.



- Connect the other end of the inlet hose to the inlet valve on the appliance back; pay attention for a tight fit too.

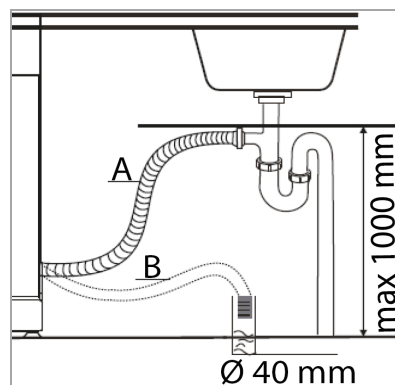
## Connect the water drain hose

### ⓘ NOTE:

The drain hose has a length of approx. 1.5 m and can extend with a suitable hose and connecting piece to a length of max. 4 m.

### ⚠ CAUTION:

To prevent backflow of contaminated water, the free end of the hose must not come under the water level of the drain.



- Connect the drain hose to a drainpipe (B) with a minimum diameter of 40 mm; alternatively, the drain hose can be fixed directly to the sink (A).
- Always make sure that the hose is not bent or squeezed.
- The drain hose may only install maximal up to a height of 1000 mm above the rinsing floor.



- Secure the drain hose securely to avoid a change in position and with it a water leakage.

### Electrical connection

#### **WARNING:**

- The installation to the mains supply must conform to the local standards and regulations.
- Improper connection may cause to an **electric shock!**
- Do not use multiple sockets or extension cords.
- It is not allowed to modify the plug provided with the appliance! If the plug does not fit properly to the outlet, let install a proper outlet by an authorized specialist.
- The accessibility of the power plug must always be ensured to disconnect the device from the power supply in case of an emergency.

- Make sure that the voltage supply matches the specifications on the rating label (door frame) before connecting.
- Connect the mains cable to a properly installed and earthed wall outlet.
- If the plug after installation is not accessible, a corresponding disconnect device must be available to meet the relevant safety regulations.

### Prior Using for the first Time

#### Before using your dishwasher for the first time:

- A. Filling salt into the salt container (water softener)
- B. Fill the rinse aid dispenser
- C. Fill in detergent

#### **CAUTION:**

- Use only salt, rinse aid and detergent for dishwashers. Other products may damage the appliance.
- Always consider the dosage and storage recommendations on the sales packaging.

#### **WARNING:**

Keep salt, rinse aid and detergent out of reach for children.

### A. Filling salt into the salt container (water softener)

#### Water softener

The water hardness varies regionally. If hard water is used in the dishwasher, deposits form on the dishes and kitchen utensils. The appliance is equipped with a water softener, that removes lime and minerals from the water by using water softening in the salt container. Your local water authority can advise you on the hardness of the water in your area.

#### Adjusting the salt consumption

The salt consumption can be adjusted according to your water hardness and therefore optimally regulated.

- Turn on the appliance.
- Press the Program selection button for more than 5 seconds, the setting mode is now activated for approx. 60 seconds.
- By repeatedly pressing the Program selection button the water hardness can be selected: H1->H2->H3->H4->H5->H6. The control lamps indicate the selection (see below table).
- The setting is automatically saved after a few seconds; alternatively end the setup with the Power button.

Water hardness		Setting	Regeneration occurs every X program sequence <sup>1)</sup>	Control lamp lights brightly	Salt consumption / cycle
°dH	Mmol/l				
0 – 5	0 – 0.94	H1	No regeneration		0 g
6 – 11	1.0 – 2.0	H2	10		9 g
12 – 17	2.1 – 3.0	H3 (Factory setting)	5		12 g
18 – 22	3.1 – 4.0	H4	3		20 g
23 – 34	4.1 – 6.0	H5	2		30 g
35 – 55	6.1 – 9.8	H6	1		60 g

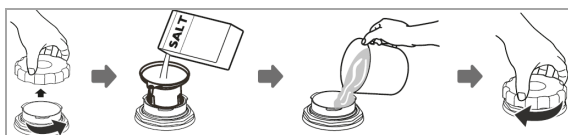
°dH: German degree of hardness

<sup>1)</sup> Every cycle with a regeneration operation consumes additional 2.0 liters of water, the energy consumption increases by 0.02 kWh and the program extends by 4 minutes.

### Fill in the salt

#### ⚠ CAUTION:

- Only refill the salt container when the salt warning lamp is lighting.
- During filling the salt container, salt and water can escape. Start a program immediately after you have filled the container to prevent corrosion.



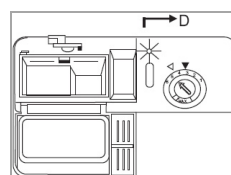
- Remove the lower basket and unscrew the lid of the salt container.
- Add about 1.5 kg of salt by using the supplied funnel tube.
- Full fill the salt container with water (just before the first use).
- Screw the lid firmly on again after filling the container.
- Depending on salt resolution, the warning lamp usually disappears immediately after filling.

### B. Fill the rinse aid dispenser

#### Function of rinse aid

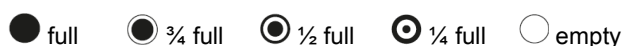
The rinse aid is automatically added during the final rinse, ensuring thorough rinsing and a spot and streak free drying.

### When to refill the rinse aid dispenser



If the corresponding message does not light up in the display, you can estimate the amount of remaining rinse aid to the optical level indicator (D) next to the dispenser.

When the rinse aid dispenser is full, the indicator is completely dark. If the rinse aid diminishes, the size of the black dot changes as shown below. To avoid spotting, the rinse aid level must not drop below ¼.



### Fill in the rinse aid



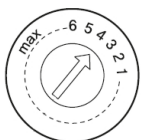
- To open the dispenser, screw the lid counter-clockwise to the open position and remove the lid.
- Add the rinse aid into the dispenser, being careful not to overfill. The dispenser contains approx. 110 ml.
- Before closing the appliance door, put on the lid in the open position back and turn it clockwise to the closed position.

### **i NOTE:**

Remove spilled rinse aid with an absorbent cloth to avoid excessive foaming during the next rinse.

### **Adjusting the rinse aid dosage**

When forming spots and the dishes dries poorly, increase the added amount of rinse aid. You can set the amount of addition between level 1 (min.) and level 6 (max.).



Take off the lid of the rinse aid dispenser and adjust the dial to the desired level. The factory setting is "4".

### **i NOTE:**

Increase the dosage if there are drops of water or lime spots on the dishes after rinsing. Reduce the dosage if there are sticky whitish stains on dishes or a bluish film on glassware or knife blades.

## **C. Fill in detergent**

### **Function of detergent**

Detergents with its chemical ingredients are necessary to remove dirt, crush dirt and transport it out of the dishwasher. The most commercially, high-quality cleaning agents are suitable for this purpose.

### **Detergent**

Normally new pulverized detergent is without phosphate. Thus, the water softener function of phosphate is not given. In this case we recommend filling salt in the salt container even when the hardness of water is only 6°dH. If detergents without phosphate are used in the case of hard water often white spots appear on dishes and glasses. In this case add more detergent to reach better results. Detergents without chlorine do only bleach a little. Strong and colored spot will not be removed completely. In this case choose a program with a higher temperature.

### **Detergent tablets (Tabs)**

Dishwasher tablets from different manufacturers dissolve at different rates. It is possible that they will

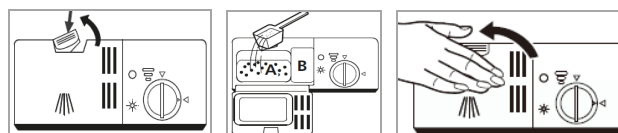
not fully dissolve in programs with short running time and low water temperature and thus does not reach their full productive efficiency. To ensure the complete removal of detergent residues, we recommend choosing rinse programs with long running times and high-water temperature. Always follow the manufacturer's instructions!

### **Fill in the detergent**

#### **i NOTE:**

- Always add the detergent just before starting the rinse cycle, otherwise it could get damp and will not dissolve properly.
- You'll find information about the amount of detergent for the respective programs in the "Program table". Note that depending on the degree of soiling and water hardness differences are possible.
- At the end of the rinse cycle the detergent dispenser must be empty.

The dispenser must be refilled before the start of each rinse cycle according to the instructions in the "Program table".



- Press the release button to open the dispenser.
  - A** Chamber of detergent in powder form for the main rinse
  - B** Chamber of detergent for the pre-rinse / Chamber for detergent in tablet form
- The main rinse chamber must be filled at least up to the marking MIN.
- Add with heavily soiled dishes an additional dose of detergent in the chamber for the pre-rinse.
- Close the dispenser. Make sure that the lid locks into place.

## Loading the Dishwasher

### ⚠ CAUTION:

Only rinse such dishes and cutlery in the dishwasher, which is expressly marked as "dishwasher resistant".

### ℹ NOTE:

- Remove gross scraps of food and soak burnt leftovers. Pre-rinse under running water is not necessary.
- Do not overload! This is important for adequate cleaning results and reasonable energy consumption.
- Very small items should not be rinsed in the appliance, as they could easily fall out of the baskets.

**For rinsing in the dishwasher the following cutlery and dishes..**

**..are not suitable:**

- Cutlery with hand pieces of wood, porcelain mother of pearl
- Plastic items that are not heat resistant
- Older cutlery with glued parts that are not temperature resistant
- Bonded cutlery items or dishes
- Pewter or cooper items
- Crystal glass
- Steel items subject to rusting
- Wooden platters
- Items made from synthetic fibres

**..are limited suitable:**

- some types of glasses can become dull after many washes
- silver and aluminum parts tend to discolor during washing
- Glazed patterns may fade if machine washed frequently

## Recommendations for loading

- Arrange sensitive, light tableware items such as glasses, coffee and teacups in the upper basket.
- Place large items that are most difficult to clean in the lower basket.
- Make sure that the tableware is placed securely and cannot tip over.
- Place all items so, that the spray arms can rotate freely during rinsing.
- Arrange all items with openings facing down.
- Curved items, or ones with recesses, should be loaded aslant so that water can drain off.
- Make sure that glasses do not touch each other.
- Set the dishes and cutlery not into each other or covering each other.
- Arrange cutlery in the cutlery basket.
- Store long as well as sharp cutlery horizontally in the dishwasher basket.

## Methods for loading normal dishware

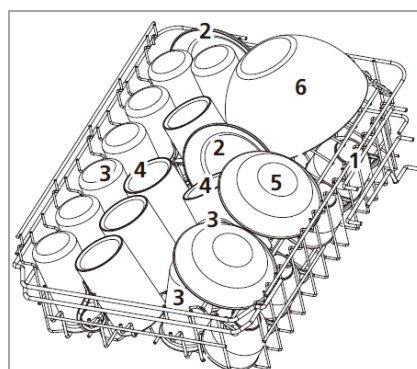
### Loading the upper basket

On the upper basket only small and medium items should be loaded. Load e.g. glasses, cups, saucers and small bowls.

### Loading the lower basket

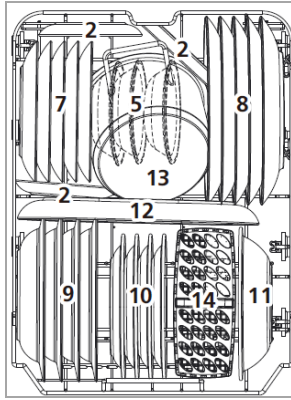
Because of the particularly intense cleaning action of the lower spray arm the lower basket is suitable for heavily soiled dishes. Load e.g. pots and plates.

Loading upper basket  
acc. EN 60436



- |                 |                            |                   |
|-----------------|----------------------------|-------------------|
| 1 Cups          | 6 Glass bowl               | 11 Melamine bowl  |
| 2 Saucers       | 7 Dessert plates           | 12 Oval platter   |
| 3 Glasses       | 8 Dinner plates            | 13 Small pot      |
| 4 Mugs          | 9 Soup plates              | 14 Cutlery basket |
| 5 Dessert bowls | 10 Melamine dessert plates |                   |

Loading lower basket  
acc. EN 60436



- Depending on the desired setting, insert the upper or lower pair of wheels into the guide; both sides should always be located at the same height.

### Cutlery basket / cutlery rack

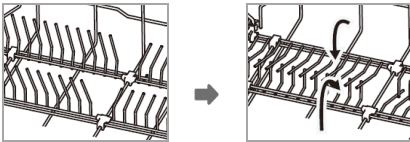
**⚠ WARNING: Risk of injury!**

- Cutlery must not protrude above the cutlery basket base.
- Knives and other utensils with sharp points must be placed with the tip down in the cutlery basket or in a horizontal position in the dishwasher basket and/or on the cutlery rack.

**i NOTE:**

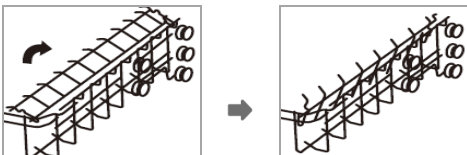
If necessary, remove the basket and/or the rack to create more space for large dishware.

### Rack shelves



To create a better arrangement for bulky dishes, the rack shelves can be folded. Lift the racks slightly and fold them down.

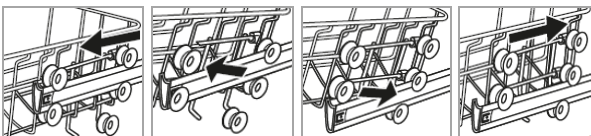
### Cup shelves



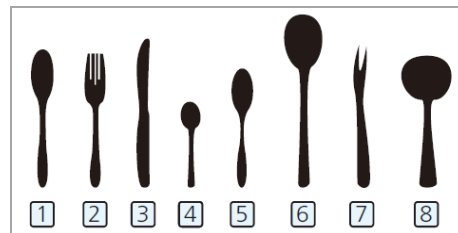
If necessary, fold down or remove the cup shelf.

### Adjusting the upper basket

The height of the upper basket can be adjusted by placing the wheels on rails of different heights. This will create more space for large items in the upper as well as in the lower basket.



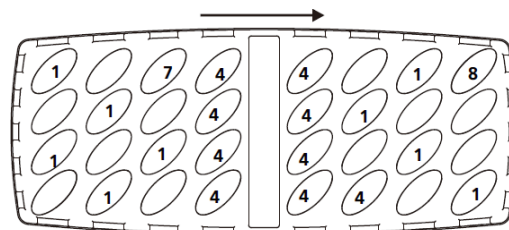
- Pull out the basket guides.
- Remove the basket out of the guides.



- |              |                 |                |
|--------------|-----------------|----------------|
| 1 Soup spoon | 4 Teaspoon      | 7 Serving fork |
| 2 Fork       | 5 Dessert spoon | 8 Gravy ladle  |
| 3 Knife      | 6 Serving spoon |                |

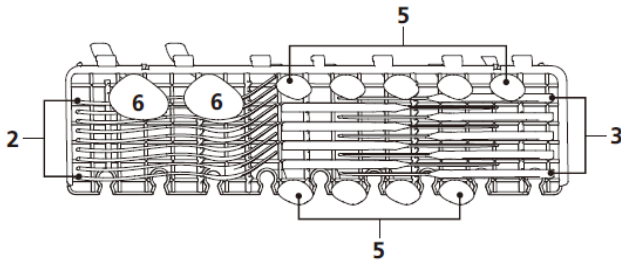
### Cutlery basket

The basket is equipped with grid inserts in which the cutlery is arranged uniformly and with the handles downwards.



### Cutlery rack






Use the shelf in the upper basket for long cutlery types, such as serving cutlery, salad servers and kitchen knives.



## Startup / Operation

### Program table

The values listed are guide values and recommendations under normal conditions and therefore not binding. Select a suitable program depending on dishes and degree of soiling.

Program	Program selection information	Program sequence	Detergent pre/main (g)	Time (Min)	Energy (kWh)	Water (l)
 Intensive	heavily soiled dishes and dried leftovers	Pre-rinse (50°C) Main rinse (65°C) Rinse Rinse Rinse (65°C) Drying	4/13 (or Tab)	205	1.378	15.3
 Universal	normal soiled dishes, daily use	Pre-rinse (45°C) Main rinse (55°C) Rinse Rinse (65°C) Drying	4/13 (or Tab)	175	1.287	13.1
<b>ECO</b> (*EN60436)	standard program for normally soiled dishes,	Main rinse (45°C) Rinse Rinse (55°C) Drying	17 (or Tab)	235	0.704	9.0
 Glass	low adhesive, fresh leftovers, such as glasses	Pre-rinse Main rinse (50°C) Rinse Rinse (65°C) Drying	4/13 (or Tab)	120	0.934	13.1
 90 Min.	for lightly soiled dishes	Main rinse (60°C) Rinse Rinse (65°C) Drying	17 (or Tab)	90	1.234	10.2
 Rapid	rapid rinse cycle for lightly soiled dishes without drying	Main rinse (50°C) Rinse Rinse (45°C)	12	30	0.611	10.0

## NOTE:

\*ECO program is the test cycle. The information for comparability test *in accordance with EN60436*.

### General information!

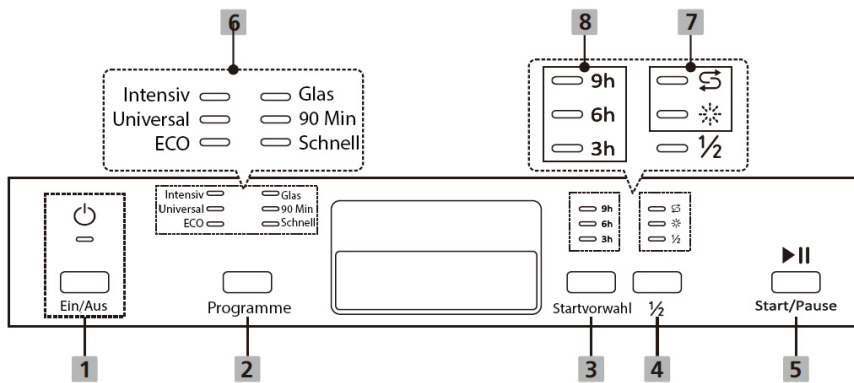
- The ECO program is suitable for cleaning normally soiled dishes, which is the most efficient program in terms of combined energy and water consumption. The program is used to check compliance with EU e-codesign legislation.

→ *Informationen for the comparability test:*

*Capacity: 9 settings; Position of upper basket: lower position; Rinse aid setting: Max; Softener setting: H3*

- Loading the domestic dishwasher to the specified capacity helps to save energy and water.
- Manual pre-washing of the dishes leads to higher water and energy consumption!
- Washing dishes in a household dishwasher generally uses less energy and water than hand washing, provided the dishwasher is used according to the instructions.

### Control panel



- 1 EIN/AUS: Button to turn on/off the power supply. The control lamp indicates the power supply.
- 2 PROGRAMME: Program selection button.
- 3 STARTVORWAHL: Button to select the start delay of 3, 6, or 9 hours. Select the operating conditions and start the program. The device starts automatically after the selected time has elapsed.
- 4  $\frac{1}{2}$ : Button to activate/deactivate the  $\frac{1}{2}$  loading function. Consider that the function is program dependent!
- 5 START/PAUSE: button to start/pause the selected or running program.
- 6 The control lamps indicate the program selection.
- 7 Control lamp: lights up when dishwasher salt needs refilling.
- 8 Control lamp: lights up when rinse aid must be added.
- $\frac{1}{2}$  Control lamp: lights up when the  $\frac{1}{2}$  loading function is activated.

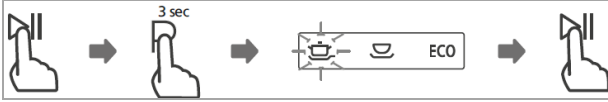
### Starting a program

- The water supply must be opened to the maximum pressure.
- Load the dishwasher baskets.
- Fill in the detergent.
- Turn on the appliance.
- Set the required program options.
- Start the operation.

## Changing the program

### ⚠ CAUTION:

A program change should be done only a short time after starting the program. Otherwise, maybe detergent has been released and already drained rinse water.



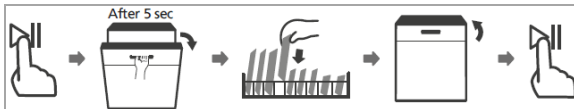
- First press the Start/Pause button to stop the current rinse program.
- Press the Program selection button for about 3 seconds.
- Select a new program and start the new operation.

## Forgot to add a dish?

### ⚠ WARNING:

Open the door very carefully during operation, there is a risk of water squirting out.

Dishware can be added any time before the detergent dispenser opens.



- Press the Start/Pause button to stop the operation. Once the spray arms have stopped, you can fully open the appliance door.
- Add forgotten dishware.
- Press the Start/Pause button, the operation will continue after approx. 10 seconds.

## At the end of program

### ⚠ CAUTION:

Allow the appliance to cool down a bit after the program has ended before you open it. This avoids that steam escapes that causing long-term damages to your furniture.

At the end of the rinse cycle will sound a series of signals; then the unit goes into standby mode.

If no operation takes place within 15 minutes, the device switches off automatically - energy-saving!

## Turn off

- Turn off the appliance.
- Close the water supply, if necessary!
- Remove the dishes after cooling (see "Unloading the dishwasher").
- Leave the appliance door slightly open until the next rinse cycle to avoid odors.
- If the appliance is not in use for an extended period, disconnect it from the power supply!

## Unloading the dishwasher

### ⚠ CAUTION:

Let the dishware cool down for about 15 minutes before unloading. Hot dishes are sensitive to knocks.

### ⓘ NOTE:

At the end of program there could be still water drops inside the appliance.

- Open the appliance door and pull out the basket.
- To avoid water dripping from the upper basket onto the dishes in the lower basket, it is advisable to unload the appliance from the bottom up.

## Energy saving tips

- Washing tableware in a household dishwasher usually consumes less energy and water in the use phase than hand dishwashing when the household dishwasher is used according to the instructions.
- Always try to operate the dishwasher when it is fully loaded.
- Do not rinse the dishes in advance under running water.
- Use for each type of load the most appropriate rinse program.



- Do not perform a pre-rinse (depending on model), if not necessary.

## Cleaning and Maintenance

### ⚠ WARNING:

- Always turn off the appliance and disconnect it from the power supply before cleaning and user maintenance.
- Allow the appliance to cool down enough before cleaning.
- Do not use steam cleaners for cleaning the appliance; moisture could enter electrical components.

**Risk of electric shock!** Hot steam could damage the plastic parts. The appliance must be dry before restarting operation.

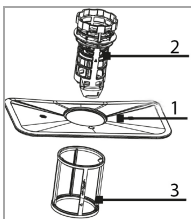
### ⚠ CAUTION:

- Do not use a wire brush or other sharp, abrasive items.
- Do not use any acidic or abrasive detergents.

### ℹ NOTE:

Dirty filters and clogged spray arms degrade the rinsing. Regularly check the filter and spray arms and clean them if necessary.

### Filter system



The three-part filter system prevents larger amounts of food or other objects from getting inside the pump.

**1 Main filter:** food and soil particles trapped in this filter are pulverized by a special jet on the lower spray arm and washed down to drain.

**2 Coarse filter:** filters out larger items such as pieces of bone or glass shards that could block the drainage.

**3 Micro filter:** filters dirt and food residues in the sump area and prevents it from being redeposited on the dishware during rinse cycle.

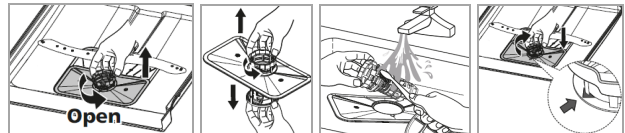
### Cleaning the filter system

#### ⚠ CAUTION:

- The dishwasher must never be used without the filter.
- Improper replacement of the filter can reduce performance and damage the appliance.
- Do not knock out the filter for cleaning to avoid possible deformations of the filters.

#### ℹ NOTE:

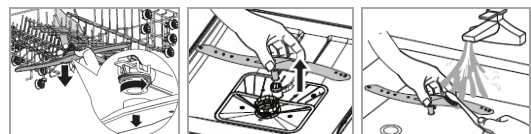
Check after each rinsing the filter for residues.



- Turn the coarse filter counterclockwise and remove the whole filter system upwards.
- Remove the coarse as well as the micro filter from the main filter.
- Remove leftover food and clean the filter under running water. Use a soft brush for the coarse and micro filter, if necessary.
- Put the filter system properly in reverse order together and reinstall in its provided position. Fix the entire system, by tightening the filter unit clockwise.

### Cleaning the spray arms

Lime and impurities from the rinsing water can block nozzles and bearings of the spray arms. Check the outlet nozzles of the spray arms regularly for blockages.



- Unscrew the securing nut of the upper spray and pull off the arm downwards.

- Pull off the lower spray arm upwards.
- Clean the arms under running water; if necessary, use a soft brush for the nozzles.
- Insert the spray arms again until they click into place and tighten the nut of the upper spray arm.

### Maintenance of the dishwasher

**△ CAUTION:**  
Never use spray cleaners to clean the door panel, this may damage the door lock and electrical components.

- Clean the appliance outer surfaces and the door sealing thoroughly with a soft, damp cloth. Use only mild cleaning agent.
- Use to remove stains inside the appliance a dampened cloth with a little white vinegar or a special detergent for dishwashers. If necessary, fill detergent in and start the appliance without dishware in the program with the highest rinse temperature.
- Dry the outer surfaces thoroughly before taking in operation again.

### Antifreeze protection

If the unit is out of operation and exposed to temperatures below zero, observe the following precautions:

- Disconnect the mains plug.
- Close the water supply and remove the inlet hose from the water valve.
- Drain the water from the inlet hose and the water valve.
- Reconnect the inlet hose to the water valve.
- Turn off the lid of the salt container and take off the filter system. Remove the remaining water in the sump with an absorbent sponge.

## Troubleshooting






### Before you contact an authorized specialist

Problem	Possible cause / Action
<i>Unit doesn't start</i>	<ul style="list-style-type: none"> <li>• Check the power supply.</li> <li>• Is the unit turned on and the door securely closed?</li> <li>• Is a program selected?</li> <li>• Is the water supply properly connected and the water supply opened?</li> </ul>
<i>Water is not drained off</i>	<ul style="list-style-type: none"> <li>• Check the drain hose.</li> <li>• Are the filters or the kitchen sink clogged?</li> </ul>
<i>Noise</i>	<ul style="list-style-type: none"> <li>• Make sure that all dishes are secured in the dishwasher.</li> <li>• Place the parts so that the spray arms can rotate freely.</li> </ul>
<i>Foaming</i>	Use only special dishwasher detergent to avoid foaming. If this occurs, open the door and let suds evaporate. Add a bit of cold water to the tub. Start a short rinse cycle to drain out the water.
<i>Flat tableware is not clean</i>	<ul style="list-style-type: none"> <li>• Select a stronger program.</li> <li>• Make sure that the spray arms are not blocked by large dishes.</li> </ul>
<i>White film on inside surface</i>	Hard water minerals: clean the interior by using a damp sponge with dishwasher detergent. Wear rubber gloves.
<i>Unsatisfactory drying result</i>	<ul style="list-style-type: none"> <li>• Improper loading</li> <li>• dishes are removed too soon</li> <li>• wrong program has been selected</li> <li>• use of cutlery with a low-quality coating</li> </ul>
<i>Spots and filming</i>	<ul style="list-style-type: none"> <li>• Extremely hard water</li> <li>• low inlet temperature</li> <li>• overloading the baskets, improper loading</li> <li>• old or damp detergent</li> <li>• incorrect dosage of detergent</li> </ul>
<i>Cloudiness glassware</i>	Use less detergent if you have soft water and select a shortest cycle to rinse and clean glassware.

Problem	Possible cause / Action
<i>Black or grey marks</i>	Aluminum utensils have rubbed against dishware. Use a mild abrasive cleaner to eliminate those marks.
<i>Stains on inner surface</i>	Only use detergents without colorants.

### Error codes

For some malfunctions, flashing control lamps will show the following disfunction to warn you:

Control lamps	Meaning / possible cause
	Water inlet fault! Faucet not open, inlet blocked or water pressure too low.
	Malfunction of heating element.
	Overflow / water leakage!
ECO 	Failure of communication between main PCB with display PCB.
	

### ⚠ CAUTION:

- If overflow occurs, turn off the main water supply before calling an authorized technician.
- If there is water in the lower housing part due to an overflowing or a small leak, remove this water before restarting the appliance.

### ℹ NOTE:

If a problem persists after following the steps above, please contact your distributor or an authorized technician.

## Technical Data

### Electrical connection / Water supply.....

Connection voltage: .....220-240 V~ / 50 Hz  
 Rated power: .....1760 – 2100 W  
 Rated current: .....10 A  
 Water pressure: .....0.04 – 1 Mpa

### Dimension H x W x D / Weight.....

Unit size: .....81.5 x 44.8 x 57.0 cm

Net weight: .....ca. 30.5 kg

### Available accessory.....

Inlet hose safety system: .....Art.-No. 8900 410

For more information about the product, scan the QR code on the supplied energy label and/or visit the official website of the product data bank:

<https://eprel.ec.europa.eu>

The right to make technical and design modifications during continuous product development remains reserved.

This appliance has been tested according to all relevant current CE guidelines, such as electromagnetic compatibility and low voltage directives, and has been constructed in accordance with the latest safety regulations.



## Disposal

### Meaning of the "Dustbin" Symbol

Protect our environment; do not dispose of electrical equipment in the domestic waste.

Please return any electrical equipment that you will no longer use to the collection points provided for their disposal.

This helps avoid the potential effects of incorrect disposal on the environment and human health.

This will contribute to the recycling and other forms of reutilization of electrical and electronic equipment.

Information concerning where these can be disposed of can be obtained from your local authority.

### ⚠ WARNING:

Remove or disable any existing snap and bolt locks if you take the unit out of operation or dispose it.

**BOMANN®**  
C. Bomann GmbH  
[www.bomann-germany.de](http://www.bomann-germany.de)  
Made in P.R.C.

Stand 06/2021